



698-790 MHz Yagi Antennas

Frequency:698-790MHz, Gain:14dBi, 10dBi, 8dBi, It is designed primarily for directional applications, Point to Multipoint applications . It is ideally suited for 700MHz LTE Band (both Verizon and AT&T LTE band).

The Yagi directional Series antenna system offered by ZDA is constructed of 6061-T6 Aluminum for outstanding service life. Individual elements are riveted with stainless steel rivets to the main boom for permanent robust attachment.

These antennas have high gain and good front to back performance to minimize external interference. They can be mounted in vertical or horizontal polarization, provides the user with anodized aluminum boom, solid elements , Heavy duty mounting hardware and Waterproof Design for all-weather operation. These Yagi directional antenna s are offered at cost-effective price.

Features:

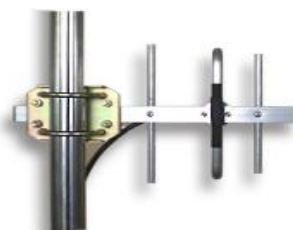
- All weather Anodized Aluminum construction
- Can be installed for either vertical or horizontal polarization
- Solid Aluminum elements
- Heavy duty mounting hardware

Applications :

- Suited for both Verizon and AT&T LTE band
- 700MHz LTE Band
- Point to Multipoint applications



ZDADJ790-10YG



ZDADJ790-8YG





698-790 MHz yagi Antennas

698-790MHz Yagi antenna series specifications

Model	ZDADJ790-8YG	ZDADJ790-10YG	ZDADJ790-14YG
Frequency Range	698-790 MHz	698-790 MHz	698-790 MHz
Gain	8 dBi	10 dBi	14 dBi
Polarization	Vertical or Horizontal	Vertical or Horizontal	Vertical or Horizontal
Horizontal Beam Width	78 °	54 °	40°
Vertical Beam Width	68 °	45°	32°
VSWR	<1.5	<1.5	<1.5
Front to back radio	>13dB	>15dB	>15dB
Input Impedance	50 ohm	50 ohm	50 ohm
Input Maximum Power	100 W	100 W	100 W
Lightning Protection	DC Ground	DC Ground	DC Ground
Connector	N female or customized	N female or customized	N female or customized
Size	16 inch (410 mm)	32 Inch (800 mm)	47 Inch (1180 mm)
Antenna Material	Alu alloy	Alu alloy	Alu alloy
Antenna Structure	3 units	6 units	10 units
Operating Temperature	-40to 85° C (-40to 185° F)	-40to 85° C (-40to 185° F)	-40to 85° C (-40to 185° F)
Diameter of Installation Pole	1.2-2.3in. (30-55mm)	1.2-2.3in. (30-55mm)	1.2-2.3in. (30-55mm)
Weight	1.3 Lbs (0.6 kg)	1.7 Lbs (0.75 kg)	2.5 Lbs (1.2kg)
Wind Loading: 100MPH 120MPH	5lb. 8lb.	11lb. 16lb.	13lb. 21lb.